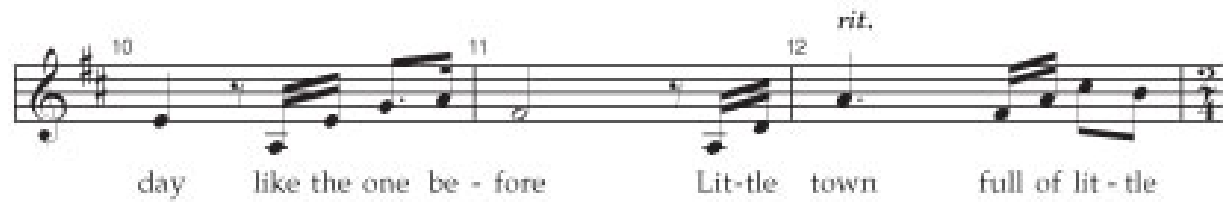
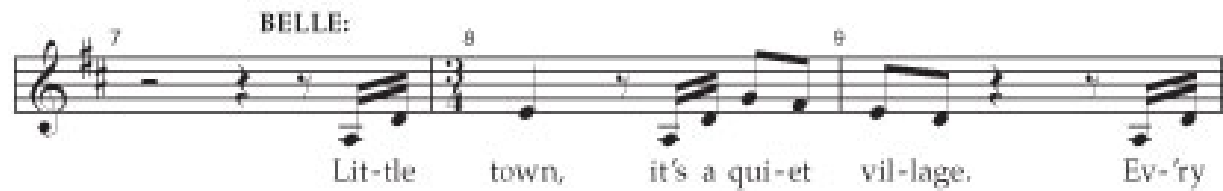


Audition Central: Disney's Beauty And The Beast JR.

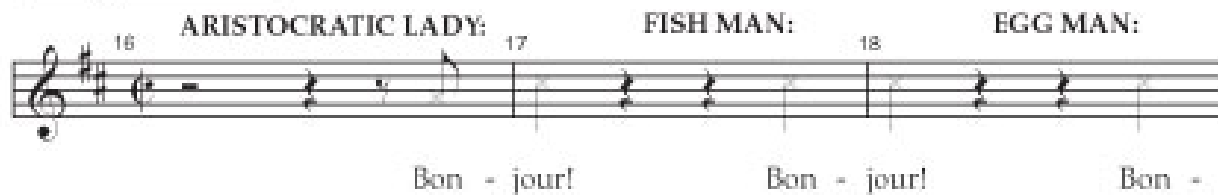
Score: Belle

Belle



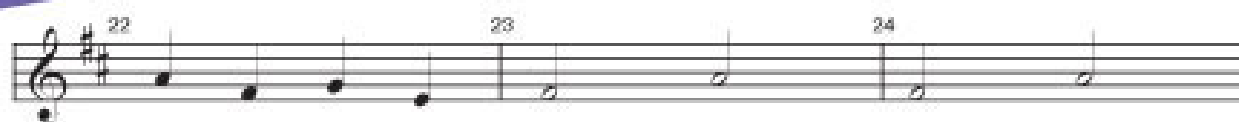
(VILLAGERS enter and begin to bustle about their daily business.)

Allegro ♩=132-136

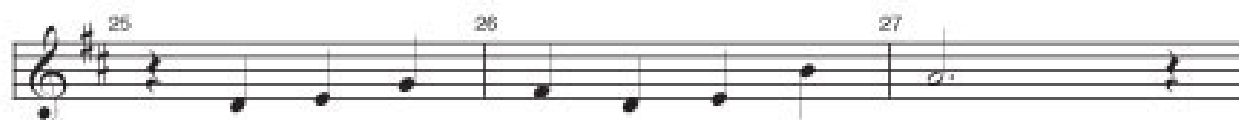


© Disney

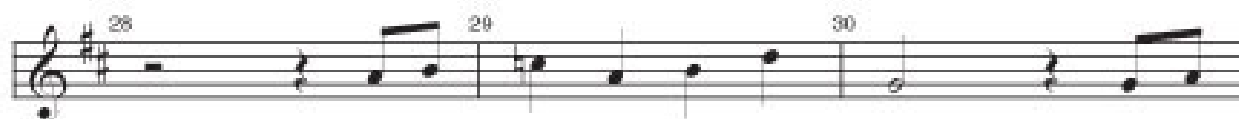
Beauty and the Beast JR. – Student Book



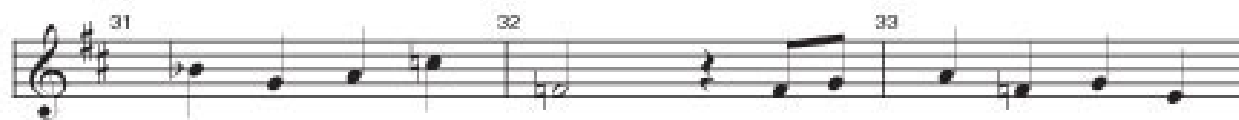
bak - er with his tray, like al - ways,



the same old bread and rolls to sell.

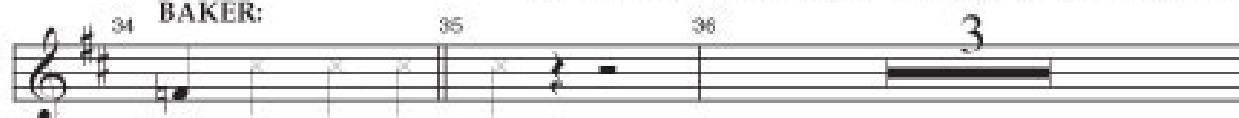


Ev - 'ry morn - ing just the same since the



morn - ing that we came to this poor pro - vin - cial

BELLE: Morning, Monsieur. BAKER: Where you off to?



town Good morn-ing Belle!

L'istesso-In 1
BELLE: *(reads her book)*

128 129 130 131 132

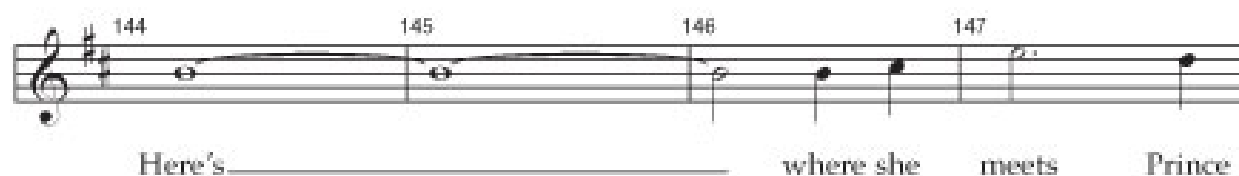
Oh, _____ is - n't this a - maz -

Detailed description: This block contains the first line of musical notation for measures 128 to 132. The music is in treble clef with a key signature of one sharp (F#). Measures 128 and 129 each contain a half note G4. Measures 130, 131, and 132 each contain a half note A4. The lyrics 'Oh, _____ is - n't this a - maz -' are written below the staff, with a blank line under 'Oh,'.

133 134 135 136 137

ing? _____ It's my fav - 'rite part be -

Detailed description: This block contains the second line of musical notation for measures 133 to 137. The music is in treble clef with a key signature of one sharp (F#). Measures 133 and 134 each contain a half note G4. Measures 135 and 136 each contain a half note A4. Measure 137 contains a half note G4. The lyrics 'ing? _____ It's my fav - 'rite part be -' are written below the staff, with a blank line under 'ing?'.



L'istesso-In 2



Home

A Tempo

BELLE:



Yes I made the choice For Pa - pa I will stay



But I don't de-serve to lose my free-dom in this way You



mon - ster — If you think that what you've done —



— is right Well then — you're a



fool — Think a - gain



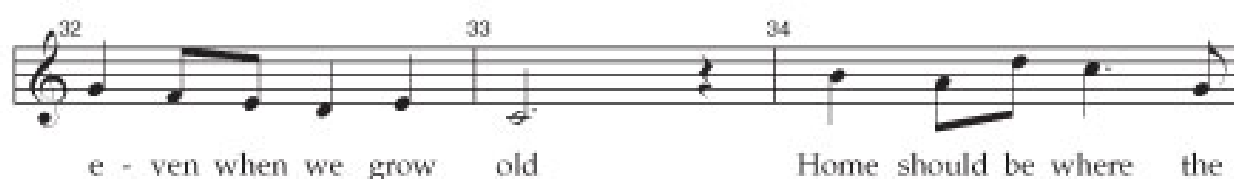
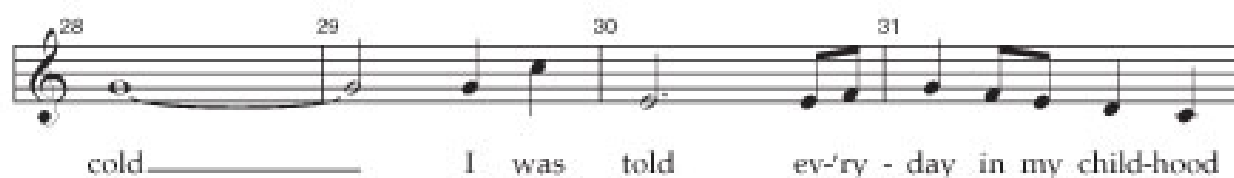
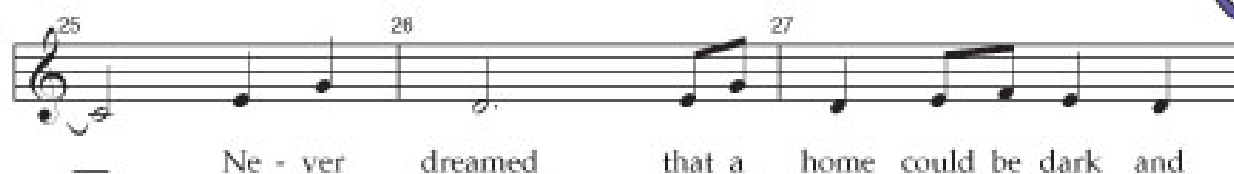
Is this

Andante con moto ♩ = 122

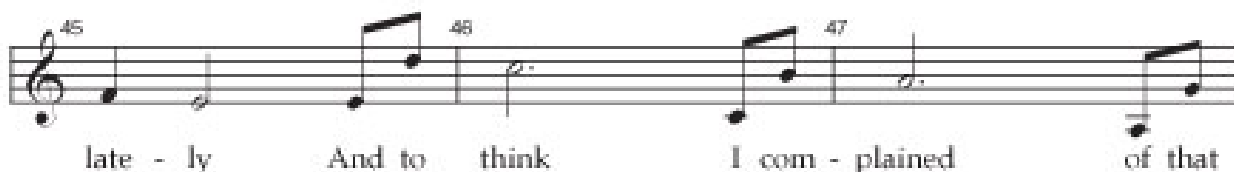
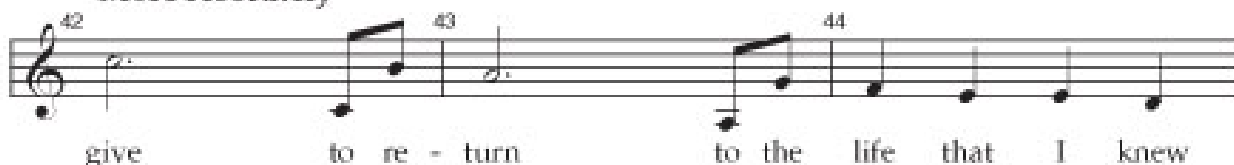


Thank you for accepting cookies. You can now hide this message or find out more about cookies.

home? Is this where I should learn to be hap - py? —

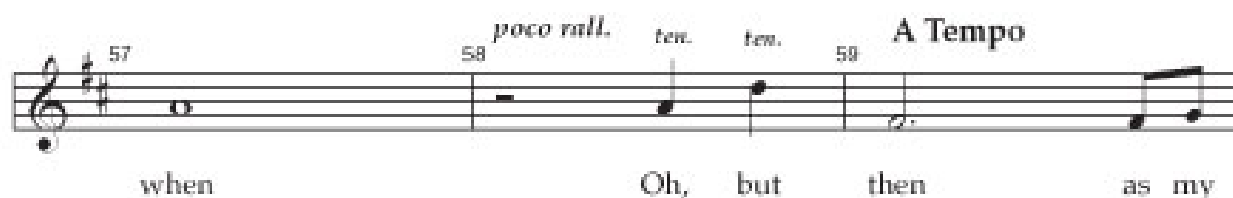
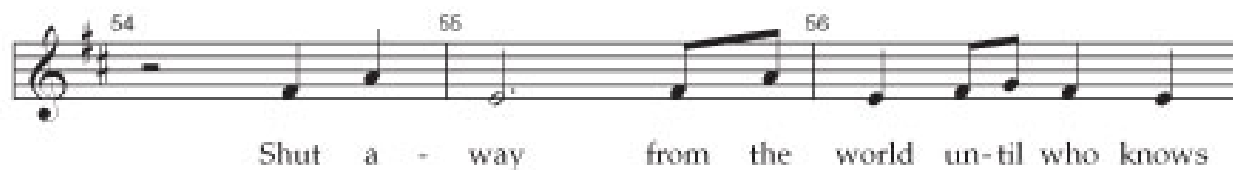


More resolutely





A Tempo-poco appassionata



A tempo *poco rit.*

way Home and free_____

Something There

BELLE:

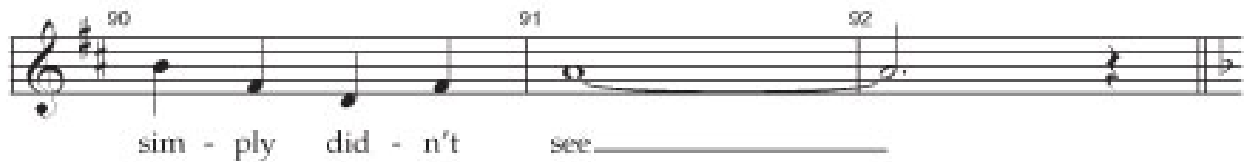
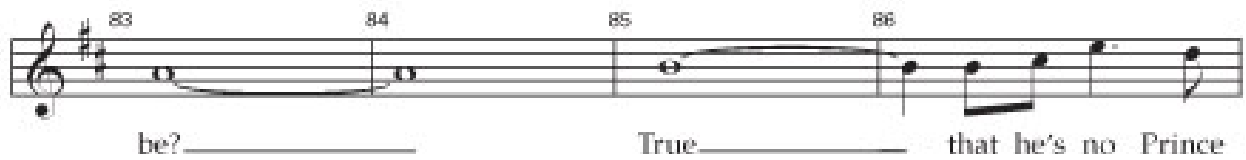
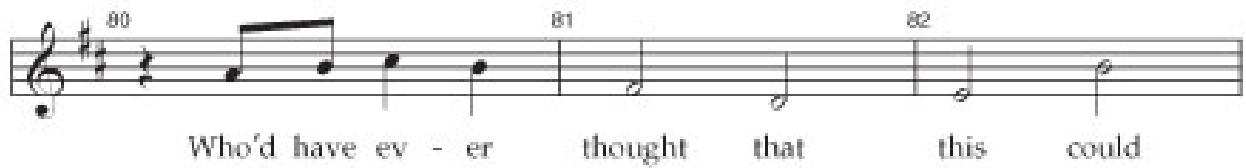
There's some-thing sweet and al-most kind But he was

mean and he was coarse and un - re - fined but now he's

dear And so un - sure I won-der why I did-n't see it there be -

fore

BELLE:



Music Theatre International
423 West 55th Street
Second Floor
New York, NY 10019
T: +1 (212) 541-4684 (tel:+1 212 541-4684)
F: +1 (212) 397-4684

Music Theatre International: Europe
12-14 Mortimer Street
London W1T 3JJ
T: +44 (0)20 7580 2827 (tel:44 + 020 7580 2827)
F: *44 (0)20 7436 9616

Music Theatre International (Australasia)
Ground Floor, Suite 2
20-22 Albert Road,
South Melbourne, 3205
Victoria, Australia
T: +61 3 9581 2222 (tel:+61 3 9581 2222)

©MTI Enterprises Inc. All Rights Reserved.

[TERMS & CONDITIONS \(/LEGAL\)](#)

[PRIVACY POLICY \(/PRIVACY-POLICY\)](#)

[CONTACT \(/ABOUT/CONTACT-US\)](#)



[SEND FEEDBACK \(/CONTACT?DESTINATION=SCORE/19155017/PRINT\)](#)