

MTI's office will close at 1 PM ET on Friday, February 16th and remain closed through Monday, February 19th in observance of Presidents' Day. Office operations will resume on Tuesday, February 20th.



## Audition Central: Disney's Beauty And The Beast JR.

Score: Babette

# Human Again

LUMIERE:

13 3 16

I'll be

Charming, gently ♩ = 54

17 18 19

cook - ing a - gain Be good look - ing a - gain

(LUMIERE:)



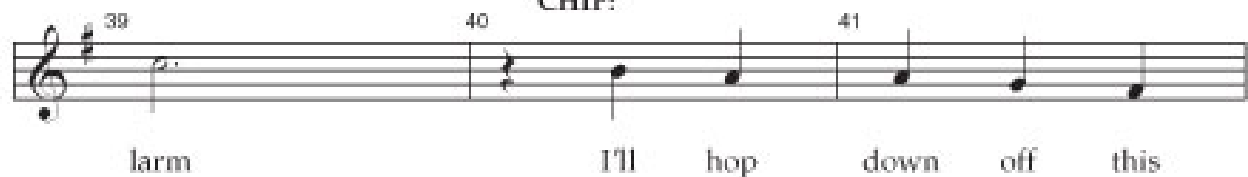
Gathering momentum  $\text{♩} = 60$



MRS. POTTS:

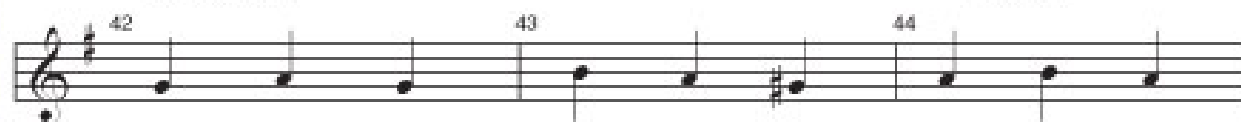


CHIP:



LUMIERE:

CHIP:



shelf And toute suite, be my - self I can't



wait to be hu - man a - gain

MRS. POTTS, BABETTE, MADAME:

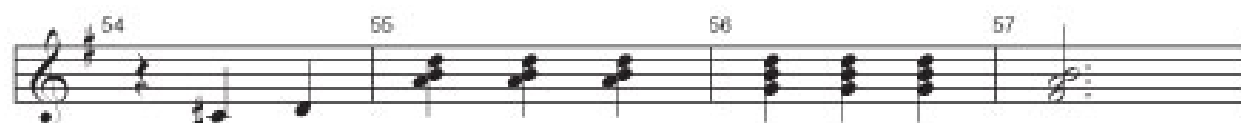


— When we're

A Tempo  $\text{♩} = 68$

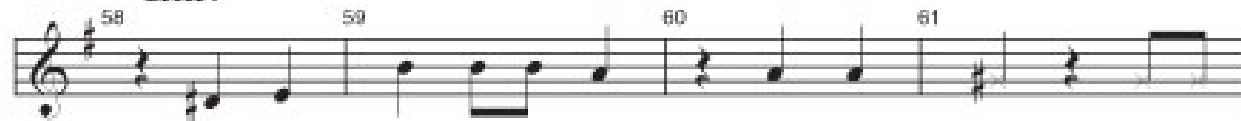


hu - man a - gain on - ly hu - man a - gain



When we're knick-knacks and what-nots no more

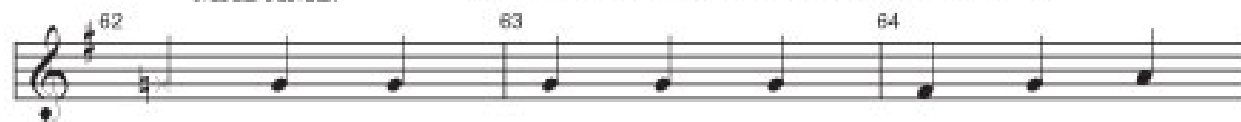
CHIP:



Lit - tle push lit - tle shove They could whoosh fall in

MADAME:

Still gathering momentum  $\text{♩} = 70-72$



love! Ah, che - rie won't it all be top

**BABETTE:**

65 66 67

drawer? I'll wear lip - stick and rouge—

**MADAME:**

68 69 70

— and I won't be so huge— Why I'll

71 72 73

eas - i - ly fit through that door—

**BABETTE:** *pochiss. accel. poco a poco* **MADAME:**

74 75 76 77

— I'll ex - ude sa - voir - faire I'll wear gowns, I'll have

**MADAME, MRS. POTTS,  
CHIP, LUMIERE, BABETTE:**

78 79 80

hair It's my prayer to be hu - man a -

**Poco pi mosso** **(COGSWORTH:)**

81 82 83 84

gain. When I'm

**A Tempo** ♩ = 74-76

85 86 87

hu - man a - gain— on - ly hu - man a - gain—

88 89 90

When the world once more starts mak - ing

91 92 93

sense I'll un - wind for a change

94 LUMIERE: (COGSWORTH:) 95 96

Real - ly that - 'd be strange Can I

97 98 99

help it if I'm t - t - tense?

100 101 102

In a shack by the sea I'll sit

103 104 105

back sip - ping tea Let my ear - ly re -

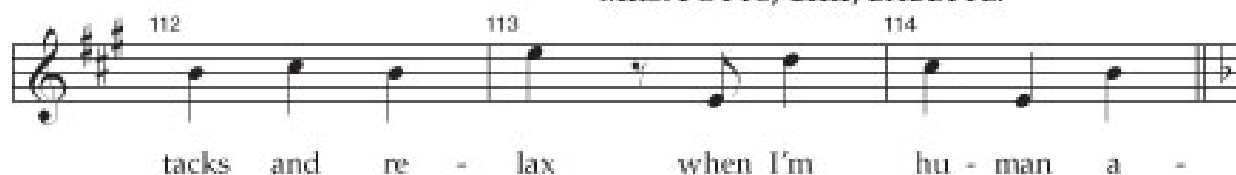
106 107 108 *cresc.*

tire - ment com - mence Far from

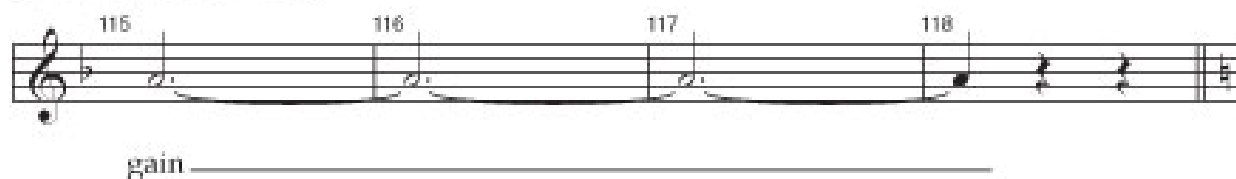
109 110 111

fools made of wax I'll get down to brass

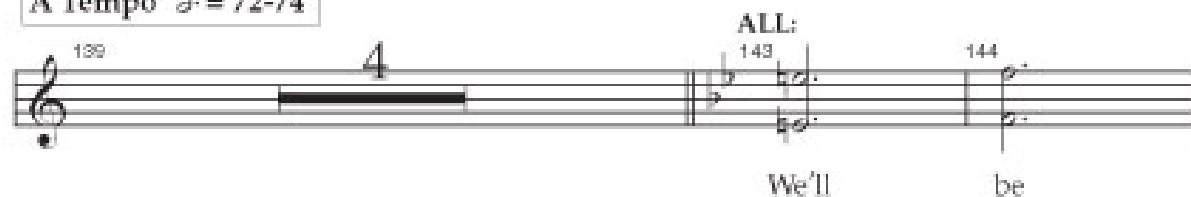
COGSWORTH, LUMIERE, MADAME,  
MRS. POTTS, CHIP, BABETTE:



A bit easier  $\text{♩} = 72$



A Tempo  $\text{♩} = 72-74$



A tempo-Grand Waltz ♩ = 74-76

DESCANT:

145 Ha

146

147

ALL:

danc - ing a - gain We'll be twirl - ing a - gain

148

149

150

— We'll be whirl - ing a - round with such

151

152

153 Ha

ease When we're hu - man a - gain

154

155

156

— On - ly hu - man a - gain We'll go



157 158 159

waltz - ing those old one - two - threes

160 161 162

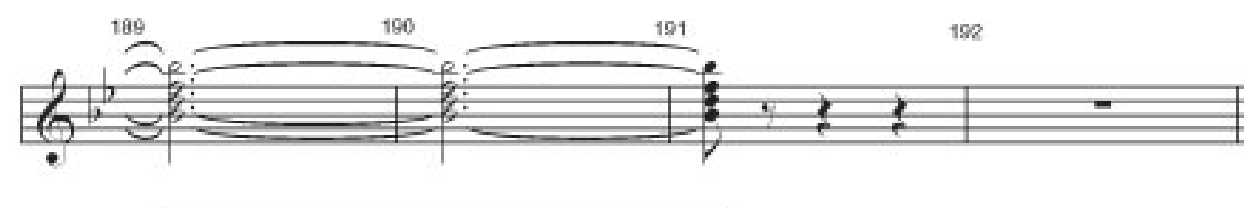
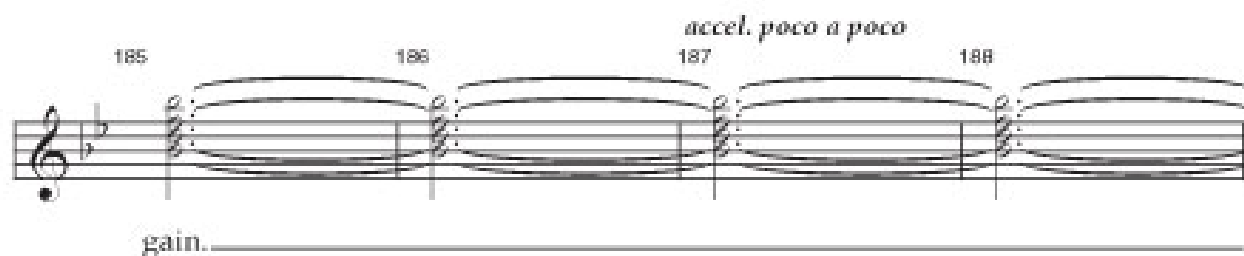
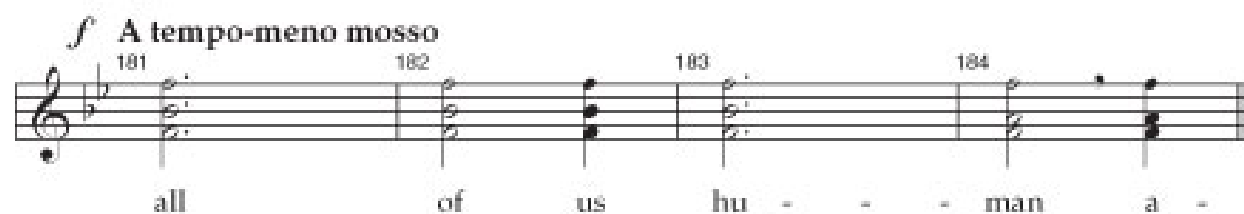
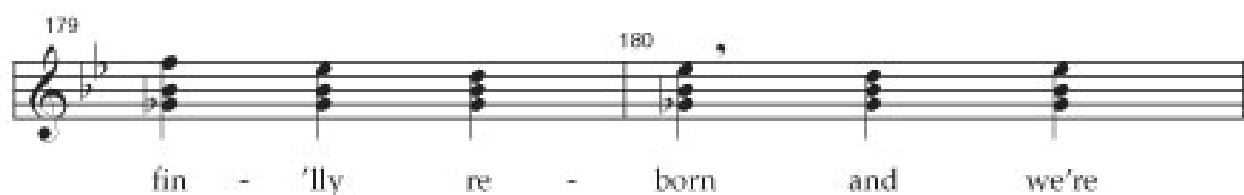
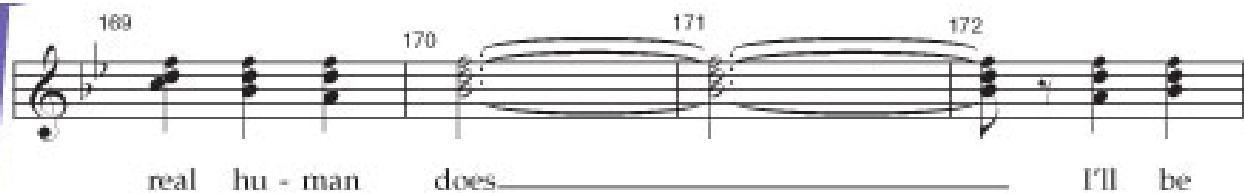
We'll be float - ing a - gain We'll be

163 164 165

glid - ing a - gain Step - ping strid - ing as

166 167 168 *ff*

fine as you please Like a



Music Theatre International  
423 West 55th Street  
Second Floor  
New York, NY 10019  
T: +1 (212) 541-4684 (tel:+1 212 541-4684)  
F: +1 (212) 397-4684

Music Theatre International: Europe  
12-14 Mortimer Street  
London W1T 3JJ  
T: +44 (0)20 7580 2827 (tel:44 + 020 7580 2827)  
F: \*44 (0)20 7436 9616

Music Theatre International (Australasia)  
Ground Floor, Suite 2  
20-22 Albert Road,  
South Melbourne, 3205  
Victoria, Australia  
T: +61 3 9581 2222 (tel:+61 3 9581 2222)

©MTI Enterprises Inc. All Rights Reserved.

[TERMS & CONDITIONS \(/LEGAL\)](#)

[PRIVACY POLICY \(/PRIVACY-POLICY\)](#)

[CONTACT \(/ABOUT/CONTACT-US\)](#)



[SEND FEEDBACK \(/CONTACT?DESTINATION=SCORE/19155049/PRINT\)](#)